

Deafness and Hearing Loss

Caroline's Story

Caroline is six years old, with bright brown eyes and, at the moment, no front teeth, like so many other first graders. She also wears a hearing aid in each ear—and has done so since she was three, when she was diagnosed with a moderate hearing loss.

For Caroline's parents, there were many clues along the way. Caroline often didn't respond to her name if her back was turned. She didn't startle at noises that made other people jump. She liked the TV on loud. But it was the preschool she started attending when she was three that first put the clues together and suggested to Caroline's parents that they have her hearing checked. The most significant clue to the preschool was Caroline's unclear speech, especially the lack of consonants like "d" and "t" at the end of words.

So Caroline's parents took her to an audiologist, who collected a full medical history, examined the little girl's ears inside and out, ran a battery of hearing tests and other assessments, and eventually diagnosed that Caroline's inner ear (the cochlea) was damaged. The audiologist said she had *sensorineural hearing loss*.



Caroline was immediately fitted with hearing aids. She also began receiving special education and related services through the public school system. Now in the first grade, she regularly gets speech therapy and other services, and her speech has improved dramatically. So has her vocabulary and her attentiveness. She sits in the front row in class, an accommodation that helps her hear the teacher clearly. She's back on track, soaking up new information like a sponge, and eager for more.



*NICHCY is the
National Dissemination Center
for Children with Disabilities.*

*NICHCY |
1825 Connecticut Avenue N.W.,
Suite 700
Washington, DC 20009
1.800.695.0285 (Voice / TTY)
202.884.8200 (Voice / TTY)
nichcy@aed.org
www.nichcy.org*

*A publication of NICHCY
Disability Fact Sheet #3
June 2010*

Hearing Loss in Children

Hearing is one of our five senses. Hearing gives us access to sounds in the world around us—people's voices, their words, a car horn blown in warning or as *hello!*

When a child has a hearing loss, it is cause for immediate attention. That's because language and communication skills develop most rapidly in childhood, especially before the age of 3. When hearing loss goes undetected, children are delayed in developing these skills.¹

Recognizing the importance of early detection, the Centers for Disease Control and Prevention (the CDC) recommends that every newborn be screened for hearing loss as early as possible, usually before they leave the hospital. Catching a hearing loss early means that treatment can start early as well and "help the child develop communication and language skills that will last a lifetime."²

Types of Hearing Loss

Before we describe the types of hearing loss a person may have, it's useful to know that sound is measured by:

- its **loudness** or **intensity** (measured in units called *decibels, dB*); and
- its **frequency** or **pitch** (measured in units called *hertz, Hz*).

Hearing loss is generally described as slight, mild, moderate, severe, or profound, depending upon how well a person can hear the intensities or frequencies most strongly associated with speech. Impairments in hearing can occur in either or both areas, and may exist in only one ear or in both ears. Generally, only children whose hearing loss is greater than 90 decibels (dB) are considered deaf.

There are four types of hearing loss, as follows.³

Conductive hearing losses are caused by diseases or obstructions in the outer or middle ear (the pathways for sound to reach the inner ear). Conductive hearing losses usually affect all frequencies of hearing evenly and do not result in severe losses. A person with a conductive hearing loss usually is able to use a hearing aid well or can be helped medically or surgically.

Sensorineural hearing losses result from damage to the delicate sensory hair

cells of the inner ear or the nerves that supply it. These hearing losses can range from mild to profound. They often affect the person's ability to hear certain frequencies more than others. Thus, even with amplification to increase the sound level, a person with a sensorineural hearing loss may perceive distorted sounds, sometimes making the successful use of a hearing aid impossible.

A **mixed hearing loss** refers to a combination of conductive and sensorineural loss and means that a problem occurs in both the outer or middle and the inner ear.

A **central hearing loss** results from damage or impairment to the nerves or nuclei of the central nervous system, either in the pathways to the brain or in the brain itself.

How Common is Hearing Loss?

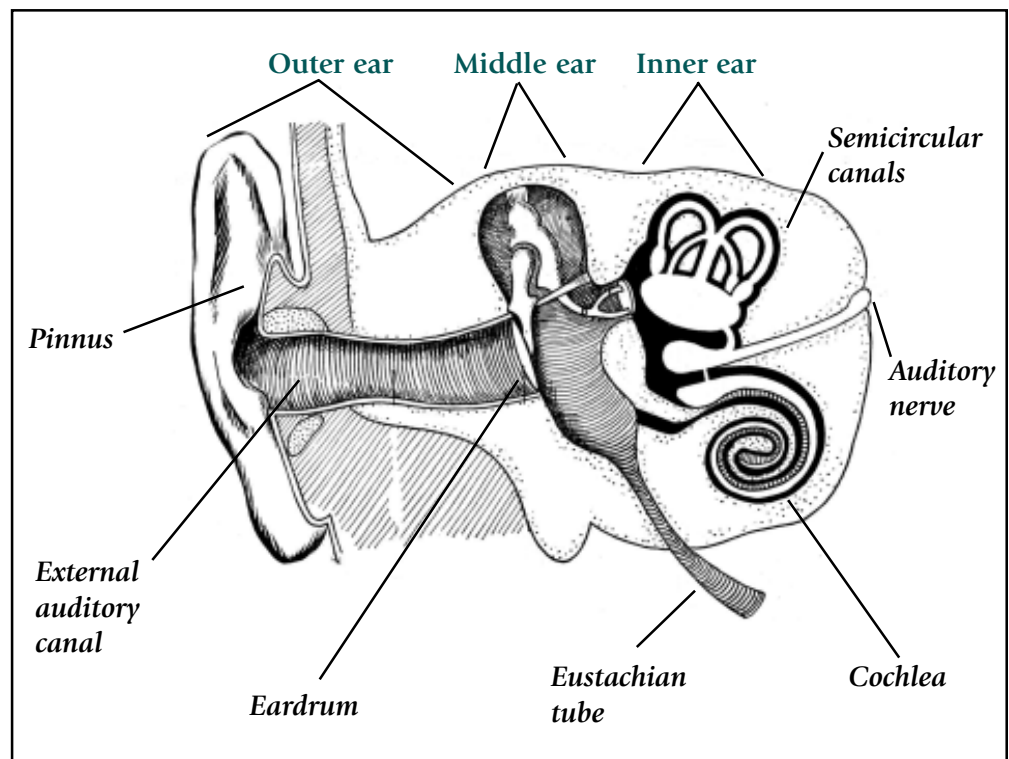
Each year in the United States, more than 12,000 babies are born with a hearing loss; often, the cause is unknown.⁴ Profound deafness occurs in 4-11 per 10,000 children; in at least 50% of these cases, the cause is genetic.⁵

Through the Universal Newborn Hearing Screening program, many states now mandate that all newborns be screened for hearing loss within hours of birth.⁷

Signs of a Hearing Loss or Deafness

Just as with Caroline, our first grader, there will be signs that a child may not be hearing normally. Parents may notice that their child:

A diagram of the ear.⁶



- does not respond consistently to sounds or to his or her own name;
- asks for things to be repeated or often says “huh?”
- is delayed in developing speech or has unclear speech;
- turns the volume up loud on the TV and other electronic devices.⁸

Causes of Hearing Loss and Deafness

Hearing loss and deafness can be either:

- *acquired*, meaning that the loss occurred after birth, due to illness or injury; or
- *congenital*, meaning that the hearing loss or deafness was present at birth.

The most common cause of acquired hearing loss is exposure to noise.⁹ Other causes can include:

- build up of fluid behind the eardrum;
- ear infections (known as otitis media);
- childhood diseases, such as mumps, measles, or chicken pox; and
- head trauma.

Congenital causes of hearing loss and deafness include:

- a family history of hearing loss or deafness;
- infections during pregnancy (such as rubella);

- complications during pregnancy (such as the Rh factor, maternal diabetes, or toxicity).

A child’s hearing loss or deafness may also be a characteristic of another disability such as Down syndrome, Usher syndrome, Treacher Collins syndrome, Crouzon syndrome, and Alport syndrome.¹⁰

In all cases, early detection and treatment are very important to the child’s development.

Is There Help Available?

Yes, there’s a lot of help available, beginning with the free evaluation of the child. The nation’s special education law, the Individuals with Disabilities Education Act (IDEA), requires that all children suspected of having a disability be evaluated *without cost to their parents* to determine if they *do* have a disability and, because of the disability, need special services under IDEA. Those special services are:

- **Early intervention** | A system of services to support infants and toddlers with disabilities (before their 3rd birthday) and their families.
- **Special education and related services** | Services available through the public school system for school-aged children, including preschoolers (ages 3-21).



To access early intervention: To identify the EI program in your neighborhood, consult NICHCY’s *State-Specific Information* for your state (online at: www.nichcy.org/Pages/StateSpecificInfo.aspx). Early intervention is listed under the first section, State Agencies. The agency that’s identified will be able to put you in contact with the early intervention program in your community. There, you can have your child evaluated free of charge and, if found eligible, your child can begin receiving early intervention services.

To access special education and related services: We recommend that you get in touch with your local public school system. Calling the elementary school in your neighborhood is an excellent place to start. The school should be able to tell you the next steps to having your child evaluated free of charge and, if found eligible, he or she can begin receiving services specially designed to address your child’s needs.

There are also special services available to low-income children through the Early Periodic Screening, Diagnosis, and Treatment (EPSDT) program, the child health component of Medicaid. To learn more about the EPSDT program, visit: <http://www.hrsa.gov/epsdt/>

More on IDEA

It's helpful to know that, while the terms "hearing impairment" and "hearing loss" are often used to describe a wide range of hearing losses, including deafness, IDEA actually defines the two terms separately, as follows:

Hearing impairment is defined by IDEA as "an impairment in hearing, whether permanent or fluctuating, that adversely affects a child's educational performance."

Deafness is defined as "a hearing impairment that is so severe that the child is impaired in processing linguistic information through hearing, with or without amplification."

Thus, deafness is viewed as a condition that prevents an individual from receiving sound in all or most of its forms. In contrast, a child with a hearing loss can generally respond to auditory stimuli, including speech.

The U.S. Department of Education reports that 14,787 children received audiology services in early intervention programs in the fall of 2004, while 139,643 children received speech-language pathology services.¹¹

The Department also reports that, during the 2003 school year, 79,522 students aged 3 to 21 received special education services under the category of

"hearing impairment."¹² However, the number of children with hearing loss and deafness is undoubtedly higher, since many of these students have other disabilities and may be served under other categories.

Educational Implications

Hearing loss or deafness does not affect a person's intellectual capacity or ability to learn. However, children who are hard of hearing or deaf generally require some form of special education services in order to receive an adequate education. Such services may include:

- regular speech, language, and auditory training from a specialist;
- amplification systems;
- services of an interpreter for those students who use sign language;
- favorable seating in the class to facilitate lip reading;
- captioned films/videos;
- assistance of a notetaker, who takes notes for the student with a hearing loss, so that the student can fully attend to instruction;
- instruction for the teacher and peers in alternate communication methods, such as sign language; and
- counseling.

Children who are hard of hearing will find it much more difficult than children who have normal hearing to learn vocabulary, grammar, word order,



idiomatic expressions, and other aspects of verbal communication. For children who are deaf or have severe hearing losses, early, consistent, and conscious use of visible communication modes (such as sign language, fingerspelling, and Cued Speech) and/or amplification and aural/oral training can help reduce this language delay. By age four or five, most children who are deaf are enrolled in school on a full-day basis and do special work on communication and language development.

It is important for teachers and audiologists to work together to teach the child to use his or her residual hearing to the maximum extent possible, even if the preferred means of communication is manual. Since the great majority of deaf children (over 90%) are born to hearing parents, programs should provide instruction for parents on implications of deafness within the family.

People with hearing loss use oral or manual means of communication or a combination of the two. Oral communication includes speech, lip reading, and the use of residual hearing. Manual communication involves signs and fingerspelling. Total Communication, as a

method of instruction, is a combination of the oral method plus signing and fingerspelling.

Using the Relay Service

Individuals with hearing loss, including those who are deaf, now have many helpful devices available to them. Text telephones (known as TTs, TTYs, or TDDs) enable persons to type phone messages over the telephone network.

The Telecommunications Relay Service (TRS) makes it possible for TT users to communicate with virtually anyone (and vice versa) via telephone through a communications assistant. Dial 711 to access all telecommunications relay services anywhere in the United States. The relay service is free.

References

- ¹ March of Dimes. (2007). *Hearing impairment*. Available online at: www.marchofdimes.com/professionals/14332_1232.asp
- ² Centers for Disease Control and Prevention. (2). *Early Hearing Detection & Intervention (EHDI) program: EHDI basics*. Available online at: www.cdc.gov/ncbddd/ehdi/default.htm
- ³ eHealthMD. (n.d.). *Different types of hearing loss*. Available online at: www.ehealthmd.com/library/hearingloss/HL_types.html
- ⁴ Centers for Disease Control and Prevention. (2). *Early Hearing Detection & Intervention (EHDI) program: EHDI basics*. Available online at: www.cdc.gov/ncbddd/ehdi/default.htm
- ⁵ American Speech-Language-Hearing Association. (n.d.). *The prevalence and incidence of hearing loss in children*. Available online at: <http://www.asha.org/public/hearing/disorders/children.htm>
- ⁶ Michigan Department of Community Health. (2004). *A diagram of the ear*. Available online at: www.michigan.gov/documents/mdch/DCH0519A_201145_7.pdf
- ⁷ National Center for Hearing Assessment & Management. (n.d.). *Status of early hearing detection and intervention in the United States*. Available online at: www.infantheating.org/status/index.html
- ⁸ American Speech-Language-Hearing Association. (n.d.). *How do I know if I have a hearing loss?* Available online at: www.asha.org/public/hearing/disorders/how_know.htm
- ⁹ The Merck Manual's Online Medical Library. (2007, April). *Hearing loss and deafness*. Available online at: <http://www.merck.com/mmhe/sec19/ch218/ch218a.html>
- ¹⁰ American Speech-Language-Hearing Association. (n.d.). *Causes of hearing loss*. Available online at: www.asha.org/public/hearing/disorders/causes.htm
- ¹¹ U.S. Department of Education. (2006). *Table 6-6. Infants and toddlers ages birth through 2 served under IDEA, Part C, by type of service on the individualized family service plan (IFSP) and state: Fall 2004*. Available online at: https://www.ideadata.org/tables29th/ar_6-6.htm
- ¹² U.S. Department of Education. (2007). *27th annual report to Congress on the implementation of the Individuals with Disabilities Education Act, 2005* (Vol. 2). Washington, DC: Author.



This publication is made possible through Cooperative Agreement #H326N080003 between the Academy for Educational Development (AED) and the Office of Special Education Programs, U.S. Department of Education. The contents of this document do not necessarily reflect the views or policies of the Department of Education, nor does mention of trade names, commercial products, or organizations imply endorsement by the U.S. Government.

Resources of Additional Information

In alphabetical order, here's a starter list of organizations providing info and guidance on deafness and hearing loss. Explore the sites below and the wealth of material they offer on types of hearing loss, newborn and early childhood screening, the EHDI program for early detection of hearing loss, guidance for parents, suggestions for educators working with children who are deaf or hard of hearing, and much more.

Organizations

Alexander Graham Bell Association for the Deaf and Hard of Hearing | www.agbell.org

American Hearing Research Foundation | www.american-hearing.org

American Society for Deaf Children | 1.800.942.2732
www.deafchildren.org/

ASHA | American Speech-Language-Hearing Association
1.800.638.8255
www.asha.org/public/hearing/

Beginnings | *For parents of children who are deaf or hard of hearing*
www.ncbegin.org/index.php

Better Hearing Institute
1.800.327.9355
www.betterhearing.org

CDC | Centers for Disease Control and Prevention
1.800.CDC.INFO
www.cdc.gov/ncbddd/dd/ddhi.htm

Deaf Children and Parents
www.deafchildrenandsigning.com/index.html

Deaf Culture Online
www.deaf-culture-online.com/index.html

Hands and Voices
www.handsandvoices.org/

Hearing Loss Association of America | www.hearingloss.org/

How's Your Hearing?

www.howsyourhearing.com/

Info to Go | Laurent Clerc National Deaf Education Center
202.651.5051
http://clerccenter.gallaudet.edu/Clerc_Center/Information_and_Resources/Info_To_Go.html

Listen Up! | www.listen-up.org

Medline Plus
www.nlm.nih.gov/medlineplus/hearingdisordersanddeafness.html

National Association of the Deaf
www.nad.org

National Center for Hearing Assessment & Management
435.797.3584
www.infanthearing.org/

NIDCD | National Institute on Deafness and Other Communication Disorders
1.800.241.1044
www.nidcd.nih.gov/health/hearing/

PEPNET | *Regional postsecondary education centers to increase access to postsecondary education for persons who are deaf.*
www.pepnet.org

Helpful Readings on Specific Subjects

Your Child's Hearing Development Checklist | www.nidcd.nih.gov/health/hearing/silence.asp

To Parents of Deaf Children | <http://www.deaf-culture-online.com/parents-of-deaf-children.html>

Early Intervention
www.infanthearing.org/earlyintervention/index.html

Assistive Technology for Hearing
www.asha.org/public/hearing/treatment/assist_tech.htm

Communications Considerations A-Z | www.handsandvoices.org/comcon/index.html

Communication Plan for a Child Who is Deaf or Hard of Hearing
www.handsandvoices.org/pdf/communication_plan.pdf

Cochlear Implants | www.nidcd.nih.gov/health/hearing/coch.asp

IEPs for Children who are Deaf or Hard of Hearing | www.helpkidshear.com/resources/advocacy/advocacy.htm#iep

Resources for People Who Can't Afford Hearing Aids and Cochlear Implants
www.hearingexchange.com/articles/paulas-110601.htm

Strategies for Teachers
www.as.wvu.edu/~scidis/hearing.html

Tips for Teachers
<http://deafness.about.com/od/schooling/a/inclassroom.htm>