



NICHCY

www.nichcy.org
800.695.0285 (v/tty)

National Toll-Free Numbers & Web Sites



The following is a selected list of toll-free numbers and, new with this edition, Web sites for national organizations concerned with disability and children's issues. Inclusion on this list does not imply endorsement by NICHCY or the Office of Special Education Programs. There are also many national disability organizations providing services and information that do not have toll-free numbers. If you would like additional help in locating assistance, or if you find that a phone number or Web address listed on this sheet doesn't work, contact NICHCY at our toll-free number above or visit our Web site. Contact information for organizations, of course, is always changing and we try our very best to keep up! In this May 2005 edition, *all new or changed entries are marked with a ★*, beginning with the entirely new category, Adoption / Foster Care.

CONTENTS

Adoption / Foster Care ★	2	Information Centers	7
AIDS / HIV	2	Literacy	8
Alcohol and Drug Abuse	2	Medical / Health Disorders	8
Americans with Disabilities Act (ADA)	2	Mental Health	11
Assistive Technology / Devices	3	Minority Issues	11
Blindness / Visual Impairments	3	Parent Support ★	12
Burns	3	Physical Disabilities	12
Cancer	4	Rare Syndromes	13
Child Abuse	4	Recreation	13
Child Care	4	Rehabilitation	13
Communication Disorders	4	Respiratory Disorders	13
Craniofacial Syndromes	4	Respite Care	13
Crisis Intervention	5	Rural	13
Deafness / Hearing Impairments	5	Specific Disabilities	13
Disability Awareness / Community Inclusion	5	Suicide Prevention	15
Education	6	Supplemental Security Income (SSI)	15
Employment / Independent Living	6	Trauma	15
Financial Counseling	7	Wishes for Children	15
Hospice	7		

★ **ADOPTION / FOSTER CARE**

AdoptUSKids
1(888) 200-4005
www.adoptuskids.org

Adoptive Families (*national adoption magazine, information for families before, during, and after adoption*)
1(800) 372-3300 (to subscribe)
www.adoptivefamilies.com

Fostering Families Today (*a bimonthly magazine with foster care and adoption resources*)
1(888) 924-6736
www.fosteringfamielstoday.com

National Adoption Center
1(800) TO ADOPT (862-3678)
www.adopt.org

National Adoption Information Clearinghouse
1(888) 251-0075
<http://naic.acf.hhs.gov/>

AIDS / HIV

AIDSinfo (*for information on HIV/AIDS, treatment, prevention, and research*)
1(800) 448-0440 (V; English/Spanish)
1(888) 480-3739 (TTY)
www.aidsinfo.nih.gov

★ CDC-INFO (*formerly the CDC National AIDS Hotline*)
1(800) 232-4636 (V; English/Spanish)
1(888) 232-6348 (TTY)
www.cdc.gov/hiv/dhap.htm

CDC National Prevention Information Network
1(800) 458-5231 (V; English/Spanish)
1(800) 243-7012 (TTY)
www.cdcnpin.org

ALCOHOL AND DRUG ABUSE

American Council for Drug Education
1(800) 488-3784
www.acde.org

Families Anonymous
1(800) 736-9805
www.familiesanonymous.org



National Clearinghouse for Alcohol and Drug Information
1(800) 729-6686 (V); 1(877) 767-8432 (Spanish)
1(800) 487-4889 (TTY)
www.health.org

National Council on Alcoholism and Drug Dependence
1(800) 622-2255
www.ncadd.org

AMERICANS WITH DISABILITIES ACT (ADA)

ADA InfoLine—U.S. Department of Justice
1(800) 514-0301 (V, English/Spanish)
1(800) 514-0383 (TTY)
www.usdoj.gov/crt/ada/adahom1.htm

Center for Universal Design
1(800) 647-6777
www.design.ncsu.edu/cud

Disability & Business Technical Assistance Centers
1(800) 949-4232 (V/TTY)
www.adata.org/centers.htm

Equal Employment Opportunity Commission
1(800) 669-4000 (V; English/Spanish)
1(800) 669-6820 (TTY)
www.eeoc.gov

Job Accommodation Network
1(800) 526-7234 (V/TTY)
1(800) 232-9675 (V/TTY; ADA Information)
<http://janweb.icdi.wvu.edu>

U.S. Access Board
1(800) 872-2253 (V)
1(800) 993-2822 (TTY)
www.access-board.gov

U.S. Department of Housing and Urban
Development—HUD User
1(800) 245-2691 (V)
1(800) 927-7589 (TTY)
www.huduser.org

ASSISTIVE TECHNOLOGY / DEVICES

ABLEDATA
1(800) 227-0216
www.abledata.com

AbleNet
1(800) 322-0956
www.ablenetinc.com

★ Alliance for Technology Access
1(800) 914-3017
www.ataccess.org

Apple Store for Education
1(800) MY APPLE (692-7753)
www.apple.com/education/accessibility

IBM Accessibility Center
1(800) 426-4832 (V)
1(800) 426-4833 (TTY)
www.ibm.com/able

National Lekotek Center's Toy Resource Helpline
1(800) 366-7529 (V)
1(800) 573-4446 (TTY)
www.lekotek.org

Georgia Tech Center for Assistive Technology and
Environmental Access (CATEA)
1(800) 726-9119 (V/TTY)
www.assistivetech.net

BLINDNESS / VISUAL IMPAIRMENTS

American Council of the Blind
1(800) 424-8666 (English/Spanish)
www.acb.org/

American Foundation for the Blind
1(800) 232-5463
www.afb.org

American Printing House for the Blind
1(800) 223-1839
www.aph.org/

Blind Childrens Center
1(800) 222-3566
www.blindcntr.org/

Library Reproduction Service
1(800) 255-5002
www.lrs-largeprint.com/

Lighthouse International
1(800) 829-0500 (V)
1(212) 821-9713 (TTY)
www.lighthouse.org/

National Association for
Parents of Children with
Visual Impairments
1(800) 562-6265
www.spdex.com/napvi/

National Library Service for the
Blind and Physically Handicapped
1(800) 424-8567
www.loc.gov/nls/

Prevent Blindness America
1(800) 331-2020
www.preventblindness.org/

Recording for the Blind and Dyslexic
1(800) 221-4792
www.rfbid.org/

★ The Foundation Fighting Blindness
1(888) 394-3937 (V)
1(800) 683-5555 (TTY)
www.blindness.org/

BURNS

Burn Survivors Throughout the World
1(800) 503-8058
www.burnsurvivorsttw.org/

Phoenix Society for Burn Survivors
1(800) 888-2876
www.phoenix-society.org/

Shriners Hospitals for Children
1(800) 237-5055
www.shrinershq.org/



CANCER

American Cancer Society
1(800) 227-2345 (English/Spanish)
www.cancer.org

American Cancer Research Center
Cancer Information and Counseling Line
1(800) 525-3777
www.amc.org/

Candlelighters Childhood Cancer Foundation
1(800) 366-2223
www.candlelighters.org/

National Brain Tumor Foundation
1(800) 934-2873 (English/Spanish)
www.braintumor.org/

National Cancer Institute Information Service
1(800) 422-6237 (V; English/Spanish)
1(800) 332-8615 (TTY)
<http://cis.nci.nih.gov/>

Support for People with Oral and Head
and Neck Cancer
1(800) 377-0928
www.spohnc.org/

CHILD ABUSE

National Center for Missing and Exploited Children
1(800) 843-5678 (V; English/Spanish)
1(800) 826-7653 (TTY)
www.missingkids.com/

National Child Abuse Hotline
1(800) 422-4453
www.childhelpusa.org/

National Clearinghouse on Child Abuse and
Neglect Information
1(800) 394-3366 (English/Spanish)
<http://nccanch.acf.hhs.gov/>

Prevent Child Abuse America
1(800) 244-5373 (English/Spanish)
www.preventchildabuse.org/

CHILD CARE

Child Care Aware
1(800) 424-2246 (English/Spanish)
www.childcareaware.org

National Child Care Information Center
1(800) 616-2242 (V; English/Spanish)
1(800) 516-2242 (TTY)
<http://nccic.org/>

National Resource Center for
Health and Safety in Child Care
1(800) 598-5437
<http://nrc.uchsc.edu/>

COMMUNICATION DISORDERS

★ American Speech-Language-Hearing Association
1(800) 638-8255
www.asha.org

Communication Aid Manufacturers Association
1(800) 441-2262
www.aacproducts.org/index.lasso

National Institute on Deafness and Other
Communication Disorders Clearinghouse
1(800) 241-1044 (V; English/Spanish)
1(800) 241-1055 (TTY)
www.nidcd.nih.gov/

National Stuttering Association
1(800) 937-8888
www.nsastutter.org/

Stuttering Foundation of America
1(800) 992-9392
www.stuttersfa.org

CRANIOFACIAL SYNDROMES

★ Aboutface USA
1(888) 486-1209
www.aboutfaceusa.org

Children's
Craniofacial Association
1(800) 535-3643
www.ccakids.org/

Craniofacial Foundation of America
1(800) 418-3223
www.craniofacialcenter.com

FACES—National Craniofacial Association
1(800) 332-2373
www.faces-cranio.org/



Foundation for Nager and Miller Syndromes
1(800) 507-3667
www.nagerormillersynd.com

CRISIS INTERVENTION

★ Air Care Alliance
1(888) 260-9707
www.aircareall.org

★ Angel Flight America
1(877) 858-7788
www.angelflightamerica.org

National Hopeline Network
1(800) SUICIDE (784-2433)
www.hopeline.com/

★ National Suicide Prevention Lifeline
1(800) 273-TALK (8255)
1(800) 799-4TTY (4889) (TTY)
www.suicidepreventionlifeline.org/

Nineline Crisis Hotline
1(800) 999-9999
www.nineline.org/

DEAFNESS / HEARING IMPAIRMENTS

★ Alexander Graham Bell
Association for the Deaf and Hard of Hearing
1(866) 337-5220
www.agbell.org

★ American Academy of Audiology
1(800) 222-2336
www.audiology.org

American Society for Deaf Children
1(800) 942-2732 (V/TTY)
www.deafchildren.org/

★ American Speech-Language-Hearing Association
1(800) 638-8255
www.asha.org

Better Hearing Institute
1(800) 327-9355 (V/TTY)
www.betterhearing.org

Hear Now
1(800) 648-4327 (V/TTY)
www.sotheworldmayhear.org

Hearing Aid Helpline
1(800) 521-5247 (V/TTY)
<http://ihsinfo.org>

John Tracy Clinic
1(800) 522-4582 (V/TTY; English/Spanish)
1(213) 748-5481 (V; in 213 area)
1(213) 747-2924 (TTY; in 213 area)
www.johntracyclinic.org/

National Cued Speech Association
1(800) 459-3529
www.cuedspeech.org

National Information Clearinghouse on Children
Who are Deaf-Blind (DB-LINK)
1(800) 438-9376 (V)
1(800) 854-7013 (TTY)
www.tr.wou.edu/dblink

National Institute on Deafness and Other
Communication Disorders Clearinghouse
1(800) 241-1044 (V; English/Spanish)
1(800) 241-1055 (TTY)
www.nidcd.nih.gov

Postsecondary Education Programs Network
Resource Center (PEPNet)
1(888) 684-4695 (V/TTY)
<http://prc.csun.edu/>



DISABILITY AWARENESS / COMMUNITY INCLUSION

★ Best Buddies
1(800) 89 BUDDY (892-8339)
www.bestbuddies.org

Kids on the Block
1(800) 368-5437
www.kotb.com

- ★ Friends Who Care (from Easter Seals)
1 (800) 221-6827
www.easterseals.com

- ★ VSA arts
1 (800) 933-8721
www.vsarts.org/

- ★ Yes I Can! Foundation for Exceptional Children
1 (800) 224-6830, Ext. 450
<http://yesican.sped.org>

EDUCATION

American Association for Vocational Instructional Materials
1 (800) 228-4689
www.aavim.com

Association for Career & Technical Education
1 (800) 826-9972 (V/TTY)
www.acteonline.org/

Association for Childhood Education International
1 (800) 423-3563
www.acei.org

- ★ The Center for Comprehensive School Reform and Improvement
1 (877) 277-2744
www.cscclearinghouse.org/

- ★ Early Childhood and Parenting Collaborative
1 (877) 275-3227 (V/TTY)
<http://ecap.crc.uiuc.edu/>

ERIC System (Educational Resources Information Center)
1 (800) 538-3742
www.eric.ed.gov

Federal Student Aid Information Center
1 (800) 433-3243 (V; English/Spanish)
1 (800) 730-8913 (TTY)
<http://studentaid.ed.gov/>

HEATH Resource Center (*for information on post-secondary education for individuals with disabilities*)
1 (800) 544-3284 (V/TTY)
www.heath.gwu.edu

National Alliance of Black School Educators
1 (800) 221-2654
www.nabse.org

National Association for the Education of Young Children
1 (800) 424-2460
www.naeyc.org

National Clearinghouse for English Language Acquisition & Language Instruction Educational Programs (NCELA)
1 (800) 321-6223
www.ncela.gwu.edu

National Information Center for Educational Media
1 (800) 926-8328 (V/TTY)
www.nicem.com/



- ★ National Institute for Literacy—
Literacy Hotline
1 (800) 228-8813 (V; English/Spanish)
1 (877) 576-7734 (TTY)
www.nifl.gov/

National Library of Education
1 (800) 424-1616 (English/Spanish)
www.ed.gov/NLE

National Middle School Association
1 (800) 528-6672
www.nmsa.org

- ★ U.S. Department of Education
Information Resource Center
1 (800) 872-5327 (V; English/Spanish)
1 (800) 437-0833 (TTY)
www.ed.gov/about/offices/list/oiia/irc.html

Also see "Literacy" resources, page 8.

EMPLOYMENT / INDEPENDENT LIVING

- ★ Disabled and Alone, Inc.
1 (800) 995-0066
www.disabledandalone.org

Education, Career, and Community Program
(*a program of the Northwest Regional Educational Laboratory*)
1 (800) 547-6339
www.nwrel.org/

- ★ Employer Assistance Referral Network
1(866) 327-6669 (V/TTY)
www.earnworks.com

Equal Employment Opportunity Commission
1(800) 669-4000 (V; English/Spanish)
1(800) 669-6820 (TTY)
www.eeoc.gov

Job Accommodation Network
1(800) 526-7234 (V/TTY)
1(800) 232-9675 (V/TTY; ADA Information)
<http://janweb.icdi.wvu.edu>

National Center on
Workforce and Disability/Adult
1(888) 886-9898 (V/TTY)
www.onestops.info/

- ★ National Collaborative on
Workforce and Disability/Youth
1(877) 871-0744
www.ncwd-youth.info/
- ★ National Council on Independent Living
1(877) 525-3400
www.ncil.org
- ★ National Resource Center on Supported Living
and Choice: Center on Human Policy
1(800) 894-0826
<http://thechp.syr.edu/nrc.html>
- ★ Proyecto Visión Hotline
1(866) EMPLEO 1 (367-5361)
www.proyectovision.net

FINANCIAL COUNSELING

National Foundation for Consumer Credit
1(800) 388-2227
1(800) 682-9832 (Spanish)
www.nfcc.org

HOSPICE

- ★ Caring Connections
1(800) 658-8898
www.caringinfo.org

Children's Hospice International
1(800) 242-4453 (V/TTY)
www.chionline.org

Hospice Education Institute
1(800) 331-1620
www.hospiceworld.org

INFORMATION CENTERS

ABLEDATA
(for information on
assistive technology)
1(800) 227-0216 (V/TTY)
www.abledata.com



- ★ HRSA Information Center
(U.S. Dept. of Health & Human Services)
1(888) 275-4772 (V; English/Spanish)
1(877) 489-4772 (TTY)
www.ask.hrsa.gov
- ★ March of Dimes
1(888) 663-4637 (English/Spanish)
www.marchofdimes.com
- ★ National Center on Birth Defects and
Developmental Disabilities
1(800) CDC-INFO (232-4636)
www.cdc.gov/ncbddd/
- ★ National Center on Low-Incidence
Disabilities (NCLID)
1(800) 395-2693 (V/TTY)
<http://nclid.unco.edu/newnclid/>

National Dissemination Center for Children with
Disabilities (NICHCY)
1(800) 695-0285 (V/TTY; English/Spanish)
www.nichcy.org

National Health Information Center
1(800) 336-4797
www.health.gov/nhic

National Lead Information Center
1(800) 424-5323 (English/Spanish)
www.epa.gov/lead/nlic.htm

National Library of Medicine
1(888) 346-3656
www.nlm.nih.gov

Office of Minority Health Resource Center
1(800) 444-6472 (English/Spanish)
www.omhrc.gov/

Zero to Three/National Center for Infants,
Toddlers, and Families
1(800) 899-4301
www.zerotothree.org/

*Also see "Medical / Health Disorders" resources,
below, for Information Centers
addressing specific health disorders.*

LITERACY

★ National Institute for Literacy—Literacy Hotline
1(800) 228-8813 (V; English/Spanish)
1(877) 576-7734 (TTY)
www.nifl.gov

ProLiteracy Worldwide
1(888) 528-2224 (English/Spanish)
www.proliteracy.org/

Reading is Fundamental
1(877) 743-7323
www.rif.org

MEDICAL / HEALTH DISORDERS

American Academy of Allergy,
Asthma, and Immunology
1(800) 822-2762
www.aaaai.org

American Association of Kidney Patients
1(800) 749-2257
www.aakp.org

American Behcet's Disease Association
1(800) 7 BEHCETS (723-4238)
www.behcets.com

American Brain Tumor Association
1(800) 886-2282
<http://hope.abta.org/>

American Cancer Society
1(800) 227-2345 (English/Spanish)
www.cancer.org

American Diabetes Association
1(800) 342-2383 (English/Spanish)
www.diabetes.org

American Heart Association
1(800) 242-8721 (English/Spanish)
www.americanheart.org

American Kidney Fund
1(800) 638-8299
www.kidneyfund.org

★ American Liver Foundation
1(800) GO LIVER (465-4837)
1(888) 4HEP USA (443-7872)
www.liverfoundation.org

American Lung Association
1(800) 586-4872 (English/Spanish)
www.lungusa.org

American Stroke Association
1(888) 478-7653
www.strokeassociation.org

★ American Syringomyelia
Alliance Project
1(800) 272-7282
www.asap.org

★ Angioma Alliance
1(866) 432-5226
www.angiomaalliance.org

Aplastic Anemia & MDS
International Foundation
1(800) 747-2820 (English/Spanish)
www.aamds.org

Arthritis Foundation
1(800) 568-4045
www.arthritis.org

Asthma and Allergy Foundation of America
1(800) 727-8462
www.aafa.org

Celiac Sprue Association
1(877) CSA-4CSA (272-4272)
www.csaceliacs.org

Children's Tumor Foundation (*formerly the National
Neurofibromatosis Foundation*)
1(800) 323-7938 (English/Spanish)
www.ctf.org

Chronic Fatigue and Immune Dysfunction
Syndrome Association (CFIDS)
1(800) 442-3437
www.cfids.org



Cleft Palate Foundation
1(800) 24 CLEFT (242-5338)
www.cleftline.org

Cooley's Anemia Foundation
1(800) 522-7222
www.thalassemia.org

Crohn's and Colitis Foundation of America
1(800) 932-2423
www.ccfa.org

Cystic Fibrosis Foundation
1(800) 344-4823
www.cff.org

Cystinosis Foundation
1(800) 392-8458
www.cystinosisfoundation.org

★ Dystrophic Epidermolysis Bullosa
Research Association of America (DeBRA)
1(866) 332-7276 (nurse line)
www.debra.org

Epilepsy Foundation
1(800) 332-1000 (English/Spanish)
www.epilepsyfoundation.org

Family Voices: A National Coalition Speaking for
Children with Special Health Care Needs
1(888) 835-5669
www.familyvoices.org

★ First Candle/SIDS Alliance
1(800) 221-7437
www.sidsalliance.org/

Foundation for Ichthyosis and Related Skin Types
1(800) 545-3286
www.scalyskin.org/

Huntington's Disease Society of America
1(800) 345-4372
www.hdsa.org

Immune Deficiency Foundation
1(800) 296-4433
www.primaryimmune.org

International Foundation for Functional
Gastrointestinal Disorders
1(888) 964-2001
www.iffgd.org

★ Juvenile Diabetes Research Foundation
1(800) 533-CURE (2873)
www.jdrf.org/

Kennedy Krieger Institute
1(888) 554-2080
www.kennedykrieger.org/

Leukemia and Lymphoma Society
1(800) 955-4572
www.leukemia-lymphoma.org

Lupus Foundation of America
1(800) 558-0121
1(800) 558-0231 (Spanish)
www.lupus.org

Lyme Disease Foundation Hotline
1(800) 886-LYME (5963)
www.lyme.org/index.html

★ MAGIC Foundation (*Major Aspects of Growth
Disorders In Children*)
1(800) 3 MAGIC 3 (362-4423)
www.magicfoundation.org

★ Malignant Hyperthermia Association
1(800) 644-9737
www.mhaus.org

March of Dimes
1(888) 663-4637 (English/Spanish)
www.marchofdimes.com

National Association of Hospital
Hospitality Houses (NAHHH)
1(800) 542-9730
www.nahhh.org/

National Brain Tumor Foundation
1(800) 934-2873 (English/Spanish)
www.braintumor.org/

National Diabetes Information Clearinghouse
1(800) 860-8747
<http://diabetes.niddk.nih.gov>

National Digestive Diseases Information Center
1(800) 891-5389
www.niddk.nih.gov

National Eating Disorders Association
1(800) 931-2237
www.nationaleatingdisorders.org



National Foundation for Transplants
1 (800) 489-3863
www.transplants.org

National Health Information Center
1 (800) 336-4797
www.health.gov/nhic

National Heart, Lung, and Blood
Institute Information Center
1 (800) 575-9355 (English/Spanish)
www.nhlbi.nih.gov

★ National Hemophilia Foundation
1 (800) 424-2634
www.hemophilia.org

National Institute of Arthritis
and Musculoskeletal and Skin
Diseases Clearinghouse
1 (877) 226-4267 (English/Spanish)
www.niams.nih.gov

★ National Institute of Child Health
and Human Development
1 (800) 370-2943
www.nichd.nih.gov

National Jewish Medical and Research Center
1 (800) 222-5864
www.njc.org/

National Kidney Foundation
1 (800) 622-9010
www.kidney.org

National Lymphedema Network
1 (800) 541-3259
www.lymphnet.org

National Marfan Foundation
1 (800) 8 MARFAN (862-7326)
www.marfan.org

★ National Multiple Sclerosis Society
1 (800) 344-4867
1 (866) KIDS W MS (543-7967) (English/Spanish)
www.nmss.org

National Organization for Albinism
and Hypopigmentation
1 (800) 473-2310
www.albinism.org



National Patient Travel Helpline
1 (800) 296-1217
www.patienttravel.org/

National Scoliosis Foundation
1 (800) 673-6922
www.scoliosis.org

National Tay-Sachs &
Allied Diseases Association
1 (800) 906-8723
www.ntsad.org

Neurofibromatosis, Inc.
1 (800) 942-6825
www.nfinc.org/

Osteogenesis Imperfecta Foundation
1 (800) 981-2663
www.oif.org

Oxalosis & Hyperoxaluria Foundation
1 (800) OHF-8699 (643-8699)
www.ohf.org

Scleroderma Foundation
1 (800) 722-4673
www.scleroderma.org

Shriners Hospital for Children
1 (800) 237-5055
www.shrinershq.org/

Sickle Cell Disease Association of America
1 (800) 421-8453
www.sicklecelldisease.org

United Leukodystrophy Foundation
1 (800) 728-5483
www.ulf.org/

United Ostomy Association
1 (800) 826-0826
www.uoa.org

Vestibular Disorders Association
1 (800) 837-8428
www.vestibular.org

★ Weight-Control Information Network (WIN)
1 (877) 946-4627
<http://win.niddk.nih.gov/index.htm>

Williams Syndrome Association
1(800) 806-1871
www.williams-syndrome.org

Wilson's Disease Association
1(800) 399-0266
www.wilsons-disease.org

Also see "Specific Disabilities" resources beginning on page 13.

MENTAL HEALTH

★ American Psychiatric Association
1(888) 35 PSYCH (357-7924)
www.psych.org

★ American Psychological Association's
Consumer Help Center
1(800) 964-2000
www.apahelpcenter.org

★ Depression and Bipolar Support Alliance
1(800) 826-3632
www.dbsalliance.org

★ Families Anonymous
1(800) 736-9805
www.familiesanonymous.org

National Alliance for the Mentally Ill
1(800) 950-6264 (English/Spanish)
www.nami.org/

National Association for the Dually Diagnosed
1(800) 331-5362
www.thenadd.org

National Hopeline Network
1(800) SUICIDE (784-2433) (English/Spanish)
www.hopeline.com/

National Institute of Mental Health (NIMH)
Information Center
1(866) 615-6464 (English/Spanish)
www.nimh.nih.gov/

National Mental Health Association
1(800) 969-6642 (V; English/Spanish)
1(800) 433-5959 (TTY)
www.nmha.org/

National Mental Health Consumer
Self-Help Clearinghouse
1(800) 553-4539 (English/Spanish)
www.mhselfhelp.org

National Mental Health Information Center
1(800) 789-2647 (English/Spanish)
www.mentalhealth.org/

★ National Suicide Prevention Lifeline
1(800) 273-TALK (8255)
1(800) 799-4TTY (4889) (TTY)
www.suicidepreventionlifeline.org/



MINORITY ISSUES

Gates Millennium Scholars
1(877) 690-4677
www.gmsp.org

Hispanic Scholarship Fund
1(877) 473-4636
www.hsf.net

National Alliance of Black School Educators
1(800) 221-2654
www.nabse.org

National Clearinghouse for English Language
Acquisition (NCELA)
1(800) 321-6223
www.ncela.gwu.edu

★ National Native American Families Together
Parent Center
1(877) 205-7501
www.nativefamilynetwork.com/

Office of Minority Health Resource Center
1(800) 444-6472 (English/Spanish)
www.omhrc.gov/

★ Proyecto Visión Hotline
1(866) EMPLEO 1 (367-5361)
www.proyectovision.net/

★ PARENT SUPPORT

Compassionate Friends (*grief support after the death of a child*)

1 (877) 969-0010

www.compassionatefriends.org

MUMS: National Parent to Parent Network

1 (877) 336-5333

www.netnet.net/mums/

National Organization of Mothers of Twins Clubs

1 (877) 540-2200

www.nomotc.org

Parent Advocacy Coalition for Educational Rights (PACER Center)

1 (888) 248-0822

www.pacer.org

Special Needs Advocate for Parents (SNAP)

1 (888) 310-9889

www.snapinfo.org

Specialized Training of Military Parents (STOMP)

1 (800) 5 PARENT (572-7368)

www.stompproject.org

Through the Looking Glass

1 (800) 644-2666

www.lookingglass.org

PHYSICAL DISABILITIES

★ Canine Companions for Independence

1 (800) 572-BARK (2275)

www.caninecompanions.org

Christopher and Dana Reeve

Paralysis Resource Center

1 (800) 539-7309

www.paralysis.org

Courage Center

1 (888) 846-8253

www.courage.org

Craniofacial Foundation of America

1 (800) 418-3223

www.craniofacialcenter.com

Easter Seals—National Office

1 (800) 221-6827 (V)

1 (312) 726-4258 (TTY)

www.easterseals.com/

★ Families of Spinal Muscular Atrophy

1 (800) 886-1762

www.fsma.org

Human Growth Foundation

1 (800) 451-6434

www.hgfound.org

Muscular Dystrophy Association

1 (800) 572-1717

www.mdausa.org/

National Institute of Arthritis and Musculoskeletal and Skin Diseases Information Clearinghouse

1 (877) 226-4267

www.niams.nih.gov

National Library Service for the Blind and Physically Handicapped

1 (800) 424-8567

www.loc.gov/nls/

National Limb Loss Information Center

1 (888) 267-5669 (English/Spanish)

www.amputee-coalition.org/

National Scoliosis Foundation

1 (800) 673-6922

www.scoliosis.org

National Spasmodic Torticollis Association

1 (800) 487-8385

www.torticollis.org

National Spinal Cord Injury Hotline

1 (800) 962-9629

www.spinalcord.org

Pathways Awareness Foundation

1 (800) 955-2445

www.pathwaysawareness.org



Spina Bifida Association of America

1 (800) 621-3141 (English/Spanish)

www.sbaa.org

United Cerebral Palsy Associations

1 (800) 872-5827

www.ucp.org/

★ Winners on Wheels (WOW)

1 (800) WOW-Talk (969-8255)

www.wowusa.com

RARE SYNDROMES

Genetic Alliance
1(800) 336-4363
<http://geneticalliance.org>

Genetic & Rare Diseases Information Center
1(888) 205-2311 (V; English/Spanish)
1(888) 205-3223 (TTY)
<http://rarediseases.info.nih.gov/>

National Organization for
Rare Disorders (NORD)
1(800) 999-6673 (V/TTY)
www.rarediseases.org/

RECREATION

Adventures in Movement
for the Handicapped
1(800) 332-8210
www.aimforthehandicapped.org/

★ Best Buddies
1(800) 89 BUDDY (892-8339)
www.bestbuddies.org

Girl Scouts of the USA
1(800) 478-7248
www.girlscouts.org

National Center on Physical Activity and Disability
1(800) 900-8086 (V/TTY)
www.ncpad.org

National Lekotek Center's Toy Resource Helpline
1(800) 366-7529 (V)
1(800) 573-4446 (TTY)
www.lekotek.org

North American Riding for the Handicapped, Inc.
1(800) 369-7433
www.narha.org

REHABILITATION

ABLEDATA
1(800) 227-0216 (V/TTY)
www.abledata.com

ADED: Association for Driver
Rehabilitation Specialists
1(800) 290-2344
www.driver-ed.org



National Clearinghouse of Rehabilitation
Training Materials
1(800) 223-5219
www.nchrtn.okstate.edu

National Rehabilitation Information Center
1(800) 346-2742
www.naric.com

RESPIRATORY DISORDERS

American Lung Association
1(800) 586-4872
www.lungusa.org

National Heart, Lung, and Blood
Institute Information Center
1(800) 575-9355 (English/Spanish)
www.nhlbi.nih.gov

National Jewish Medical &
Research Center
1(800) 222-5864
www.njc.org/

RESPIRE CARE

★ National Family Caregivers Association
1(800) 896-3650
www.thefamilycaregiver.org

RURAL

Rural Institute on Disabilities
1(800) 732-0323
<http://ruralinstitute.umt.edu/>

SPECIFIC DISABILITIES

American Association on Mental Retardation
1(800) 424-3688 (outside Metro DC area)
(202) 387-1968 (in DC)
www.aamr.org

Angelman Syndrome Foundation
1(800) 432-6435
www.angelman.org/angel/

★ The Arc of the United States
1(800) 433-5255
www.thearc.org

Autism Society of America
1(800) 3 AUTISM (328-8476)
www.autism-society.org

Beckwith Wiedemann Support Network
1(800) 837-2976
<http://beckwith-wiedemann.org>

Brain Injury Association
Family Helpline
1(800) 444-6443 (English/Spanish)
www.biausa.org

Center for the Study and Treatment
of Usher Syndrome at Boys Town
National Research Hospital
1(800) 835-1468 (V/TTY)
www.boystownhospital.org

★ Charge Syndrome Foundation
1(800) 442-7604
www.chargesyndrome.org

Children and Adults with
Attention-Deficit/
Hyperactivity Disorder (CHADD)
1(800) 233-4050
(301) 306-7070 (in Washington, DC metro area)
www.chadd.org

Cornelia de Lange Syndrome Foundation
1(800) 223-8355
(860) 676-8166 (in CT)
www.cdlsusa.org

Family Empowerment Network: Support for Families
Affected by FAS/E
1(800) 462-5254 (for families)
www.fammed.wisc.edu/fen

★ Fetal Alcohol Spectrum Disorders Center
1(866) 786-7327
www.fascenter.samhsa.gov/index.cfm

International Dyslexia Association
1(800) 222-3123
www.interdys.org

International Rett Syndrome Association
1(800) 818-7388
www.rettsyndrome.org

Learning Disabilities Association of America
1(888) 300-6710
www.ldaamerica.org

Little People of America
1(888) 572-2001
www.lpaonline.org

National Center for Learning Disabilities
1(888) 575-7373
www.ld.org/

National Down Syndrome Congress
1(800) 232-6372
www.ndscenter.org/

National Down Syndrome Society
1(800) 221-4602 (English/Spanish)
www.ndss.org/

National Fragile X Foundation
1(800) 688-8765
www.fragilex.org

National Gaucher Foundation
1(800) 428-2437
www.gaucherdisease.org/

National Niemann-Pick
Disease Foundation
1(877) 287-3672
www.nnpdf.org/

National Organization on Fetal Alcohol Syndrome
1(800) 666-6327
www.nofas.org

National Reye's Syndrome Foundation
1(800) 233-7393
www.reyessyndrome.org

National Stuttering Association
1(800) 937-8888
www.nsastutter.org

Prader-Willi Syndrome Association
1(800) 926-4797
www.pwsausa.org

Spina Bifida Association of America
1(800) 621-3141 (English/Spanish)
www.sbaa.org

Sturge-Weber Foundation
1(800) 627-5482
www.sturge-weber.com/



Stuttering Foundation of America
1(800) 992-9392
www.stuttersfa.org

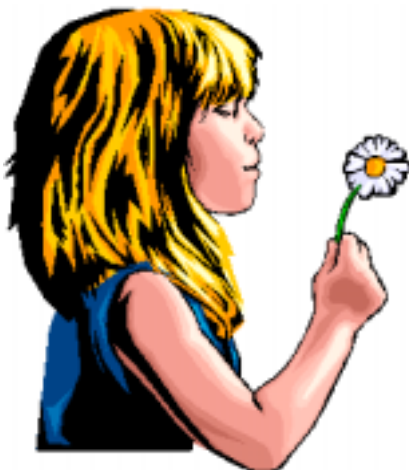
Support Organization for Trisomy 18, 13, and Related Chromosomal Disorders
1(800) 716-7638
www.trisomy.org

Tuberous Sclerosis Alliance
1(800) 225-6872
www.tsalliance.org/

United Cerebral Palsy Associations
1(800) 872-5827
www.ucp.org/

Williams Syndrome Association
1(800) 806-1871
www.wsf.org/

Also see resources for "Medical/Health Disorders," beginning on page 8.



TRAUMA

American Trauma Society
1(800) 556-7890
www.amtrauma.org/

Brain Injury Association Family Helpline
1(800) 444-6443
www.biausa.org

National Spinal Cord Injury Association
1(800) 962-9629
www.spinalcord.org

WISHES FOR CHILDREN

Believe in Tomorrow National Children's Foundation
1(800) 933-5470
www.believetomorrow.org

Sunshine Foundation
1(800) 767-1976
http://sunshinefoundation.org/

SUICIDE PREVENTION

American Foundation for Suicide Prevention
1(888) 333-2377
www.afsp.org

National Hopeline Network
1(800) SUICIDE (784-2433)
www.hopeline.com

★ **National Suicide Prevention Lifeline**
1(800) 273-TALK (8255)
www.suicidepreventionlifeline.org

Nineline Crisis Hotline
1(800) 999-9999
www.nineline.org

See also "Crisis Intervention" resources on page 5, and "Mental Health" resources, on page 11.

SUPPLEMENTAL SECURITY INCOME (SSI)

Social Security Administration
1(800) 772-1213 (V; English/Spanish)
1(800) 325-0778 (TTY)
www.ssa.gov/

GR5—2005



This list is made possible through Cooperative Agreement #H326N030003 between the Academy for Educational Development and the Office of Special Education Programs, U.S. Department of Education. The contents

of this publication do not necessarily reflect the views or policies of the Department of Education, nor does mention of trade names, commercial products, or organizations imply endorsement by the U.S. Government.



This information is copyright free. Readers are encouraged to copy and share it, but please credit the National Dissemination Center for Children with Disabilities (NICHCY).

NICHCY
P.O. Box 1492
Washington, DC 20013-1492
1(800) 695-0285 www.nichcy.org nichcy@aed.org